

# Industrial

## MAINTENANCE REPAIR OPERATIONS

### PROFESSIONAL GRADE FEATURES



**ADJUSTABLE SOLID RUBBER HOSE STOP**  
for lead length positioning

**VERSATILE GUIDE ARM** adjusts to wall,  
floor, ceiling & vehicle mounting

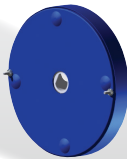
**EXTERNAL FLUID PATH WITH MACHINED FROM  
SOLID BRASS 90° FULL-FLOW NPT SWIVEL**  
that screws directly on 1" solid steel axle,  
for simple seal maintenance and fast and  
easy hose installation - Viewable on other side



**HIGH QUALITY STEEL CONSTRUCTION**  
with our durable CPC™ powder coat finish

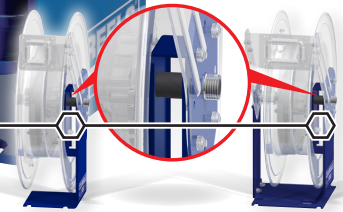
**HEAVY DUTY SPUN DISCS** with rolled edges  
for greater strength, made with first of it's  
kind CNC robotic spin cell

**ENCLOSED FACTORY TUNED AND MATCHED  
CARTRIDGE-STYLE SPRING MOTOR**, easily removed  
for safe & convenient replacement - Viewable on other side



**HEAVY GAUGE 1/4" STEEL BASE &  
SUPPORT POST** for maximum stability

**DUAL AXLE SUPPORT WITH SUPER HUB™** increased  
reel strength for more demanding applications  
- Available on SH and T Series only



### POSSIBLE FIELDS OF APPLICATION

- Maintenance, Repair & Operations
- Manufacturing Plants & Facilities
- Power Tools
- Light Source
- General Industrial
- Air / Water Services
- Washdown



[www.coxreels.com](http://www.coxreels.com)

800.COX.REEL

P: 480.820.6396

F: 480.820.5132

E: [info@coxreels.com](mailto:info@coxreels.com)



## P SERIES

- External fluid path with machined from solid brass 90° full-flow NPT swivel inlet (Zinc plated steel swivel on HP models)
- Swivel Seals: NITRILE
- Sturdy single pedestal spring driven reel with space saving design facilitates workplace organization
- Available in Medium & High Pressure

MODEL	EZ-Coil® Safety Line	I.D.	FT.	PSI	APRX. LBS.	W x H x L
P-LP-125	EZ-P-LP-125	1/4"	25	300	27	5 7/8 x 14 7/8 x 13 1/2"
P-LP-150	EZ-P-LP-150	1/4"	50	300	40	6 3/4 x 18 5/8 x 17 1/8"
P-LP-325	EZ-P-LP-325	3/8"	25	300	28	6 1/2 x 14 7/8 x 13 1/2"
P-LP-350	EZ-P-LP-350	3/8"	50	300	43	6 3/4 x 18 5/8 x 17 1/8"
P-LP-425	-	1/2"	25	300	44	7 x 18 5/8 x 17 1/8"
P-LP-450	EZ-P-LP-450	1/2"	50	300	48	7 x 18 5/8 x 17 1/8"



## SH, MP & HP SERIES - EQUIPPED WITH SUPER HUB™

- External fluid path with machined from solid brass 90° full-flow NPT swivel inlet (Zinc plated steel swivel on HP models)
- Swivel Seals: NITRILE
- Sturdy single pedestal spring driven reel features Coxreels' exclusive Super Hub™ dual axle support system



MODEL	EZ-Coil® Safety Line	I.D.	FT.	PSI	APRX. LBS.	W x H x L
SH-N-350	EZ-SH-350	3/8"	50	300	50	8 1/4 x 21 1/4 x 19 1/2"
SH-N-375	EZ-SH-375	3/8"	75	300	68	8 1/4 x 21 1/4 x 24"
SH-N-450	EZ-SH-450	1/2"	50	300	54	8 1/4 x 21 1/4 x 19 1/2"
SH-N-475	EZ-TSH-475	1/2"	75	300	68	8 3/4 x 25 1/2 x 24"
MP-N-350	EZ-MP-350	3/8"	50	3,000	65	8 1/4 x 21 1/4 x 19 1/2"
MP-N-450	EZ-MP-450	1/2"	50	2,500	67	8 3/4 x 25 1/2 x 19 1/2"
HP-N-150	EZ-HP-150	1/4"	50	5,000	64	8 3/4 x 25 1/2 x 19 1/2"
HP-N-350	EZ-HP-350	3/8"	50	4,000	65	9 1/4 x 25 1/2 x 19 1/2"



## 1125 SERIES

- External fluid path with machined from solid brass 90° full-flow NPT swivel inlet (Nickel plated steel swivel on 1" models)
- Swivel Seals: NITRILE (AFLAS on 1" models)
- Exclusive low profile outlet riser & open drum slot design for flat smooth hose wrap
- All welded steel "A" frame construction for superior reel structure

MODEL	MOTOR OPTION	I.D.	FT.	PSI	APRX. LBS.	W x H x L
1125-5-100	Electric Motor Options Available	3/4"	100	3,000	42	26 3/4 x 18 3/4 x 17 5/8"
1125-5-175		3/4"	175	3,000	50	32 3/4 x 18 3/4 x 17 5/8"
1125-5-200		3/4"	200	3,000	55	38 3/4 x 18 3/4 x 17 5/8"
1125-5-250		3/4"	250	3,000	59	42 3/4 x 18 3/4 x 17 5/8"
1125-6-50		1"	50	3,000	55	42 3/4 x 18 3/4 x 17 5/8"
1125-6-100		1"	100	3,000	69	32 x 18 1/2 x 17 5/8"



## C SERIES - AIR / WATER & AIR/ELECTRIC - DUAL PURPOSE HOSE REELS

- Two compact reel assemblies for dual applications. Each reel operates independently and mounts in one compact footprint.

### AIR / WATER

- Two external fluid path with machined from solid brass 90° full-flow NPT swivel inlet (Zinc plated steel swivel on HP models)
- Swivel Seals: NITRILE

### AIR/ELECTRIC

- External fluid path with machined from solid brass 90° full-flow NPT swivel inlet
- Choice of electrical accessory



MODEL	I.D.	FT.	ACCESSORY	AWG / NO. COND.	AMPS	PSI	APRX. LBS.	W x H x L
C-LP-325-325	3/8"	25	-	-	-	300	67	11 1/2 x 18 5/8 x 17"
C-LP-335-335	3/8"	35	-	-	-	300	69	11 1/2 x 18 5/8 x 17"
C-LP-350-350	3/8"	50	-	-	-	300	78	11 1/2 x 18 5/8 x 17"
C-LP-425-425	1/2"	25	-	-	-	300	70	11 1/2 x 18 5/8 x 17"
C-L350-5016-A	-	50	Single Industrial Receptacle	16 / 3	13	300	94	16 x 18 5/8 x 17"
C-L350-5012-B	-	50	Quad Receptacle	12 / 3	20	300	97	16 x 18 5/8 x 17"
C-L350-5016-C	-	50	Fluorescent Tube	16 / 3	0.3	300	94	16 x 18 5/8 x 17"
C-L350-5016-D	-	50	Fluorescent Angle	16 / 3	13	300	94	16 x 18 5/8 x 17"
C-L350-5016-E	-	50	Incandescent Light	16 / 3	13	300	94	16 x 18 5/8 x 17"
C-L350-5012-F	-	50	Duplex G.F.C.I	12 / 3	13	300	94	16 x 18 5/8 x 17"



## PC SERIES

- External heavy gauge CPC™ powder coated steel component cover for simple slip ring routine maintenance
- Single pedestal cord reel with space saving design facilitates workplace organization
- Choice of electrical accessory



MODEL	EZ-Coil® Safety Line	ACCESSORY	AWG / NO. COND.	CORD FT.	AMPS	APRX. LBS.	W x H x L
PC13-5012-A	EZ-PC13-5012-A	Single receptacle	12 / 3	50	20	40	8 1/2 x 14 7/8 x 13 1/2"
PC13-5012-B	EZ-PC13-5012-B	Quad receptacle	12 / 3	50	20	41	8 1/2 x 14 7/8 x 13 1/2"
PC13-5016-C	EZ-PC13-5016-C	Fluorescent tube	16 / 3	50	0.3	37	8 1/2 x 14 7/8 x 13 1/2"
PC13-5016-D	EZ-PC13-5016-D	Fluorescent angle light	16 / 3	50	13	37	8 1/2 x 14 7/8 x 13 1/2"



## P-W & SHW SERIES

- External fluid path with 90° full-flow dual ported brass swivel offering both connections from the same side of the reel
- Single pedestal reel with space saving design facilitates workplace organization
- Available in "T" Grade welding hose

MODEL	EZ-Coil® Safety Line	I.D.	FT.	PSI	APRX. LBS.	W x H x L
P-W-125	EZ-P-W-125	1/4"	25	200	46	8 1/2 x 18 5/8 x 17"
SHW-N-150	EZ-SHW-150	1/4"	50	200	64	10 1/4 x 21 1/4 x 19 1/2"
SHW-N-1100	EZ-SHW-1100	1/4"	100	200	84	10 1/4 x 25 1/2 x 19 1/2"



## P-WC SERIES

- External, easily accessible heavy gauge CPC™ powder coated steel components cover for simple slip ring routine maintenance
- Single pedestal reel with space saving design facilitates workplace organization

MODEL	FT.	TYPE	VOLT.	AMPS.	APRX. LBS.	W x H x L
P-WC17-5002	50	2 GA	600	225	56	11 x 14 1/2 x 13 3/4"
P-WC17-5001	50	1 GA	600	300	60	11 x 14 1/2 x 13 3/4"
P-WC17-5020	50	2/0	600	450	68	11 x 14 1/2 x 13 3/4"
P-WC17-5010	50	1/0	600	350	64	11 x 14 1/2 x 13 3/4"

This selection only represents a sample of products applicable in this industry. Please visit us online or consult the factory for more product options.